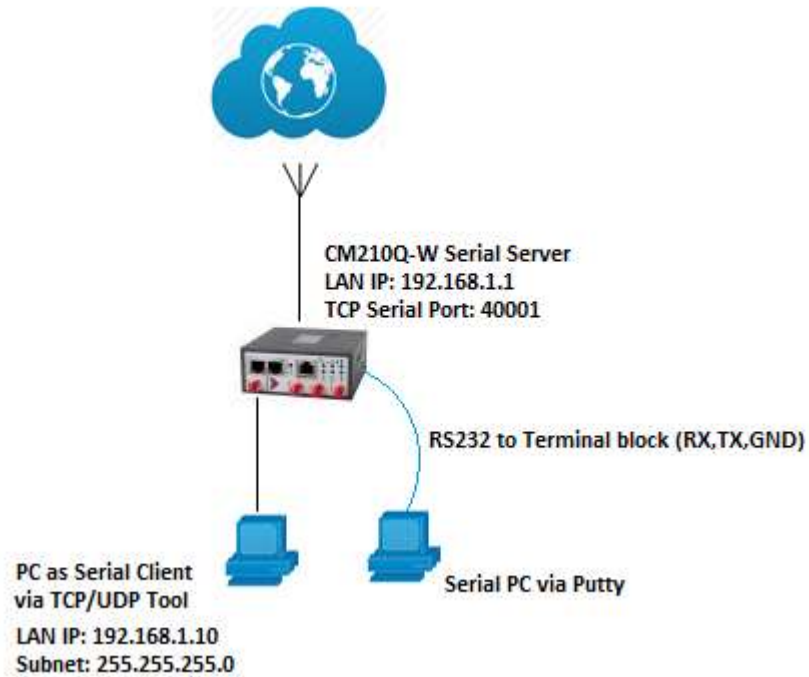
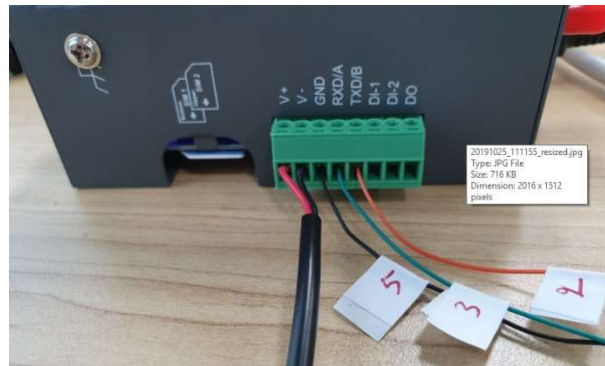
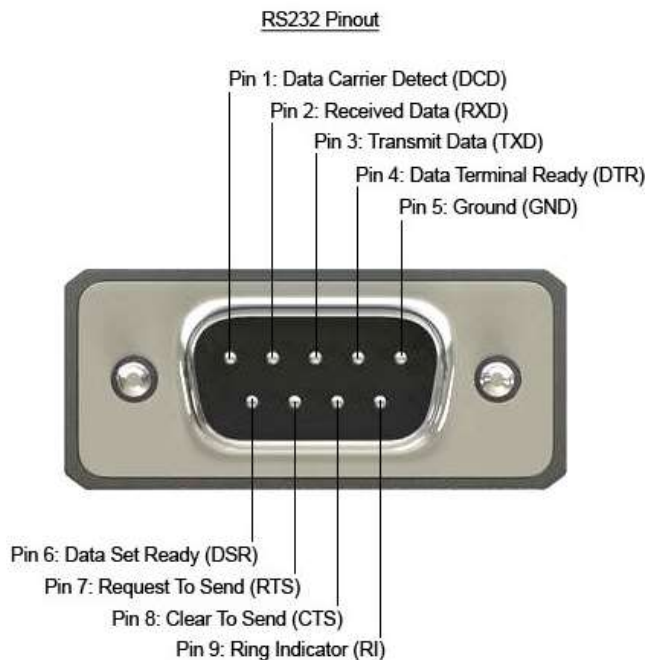


How to configure Serial TCP Server/Client on the CM210Q-W

Network Topology:

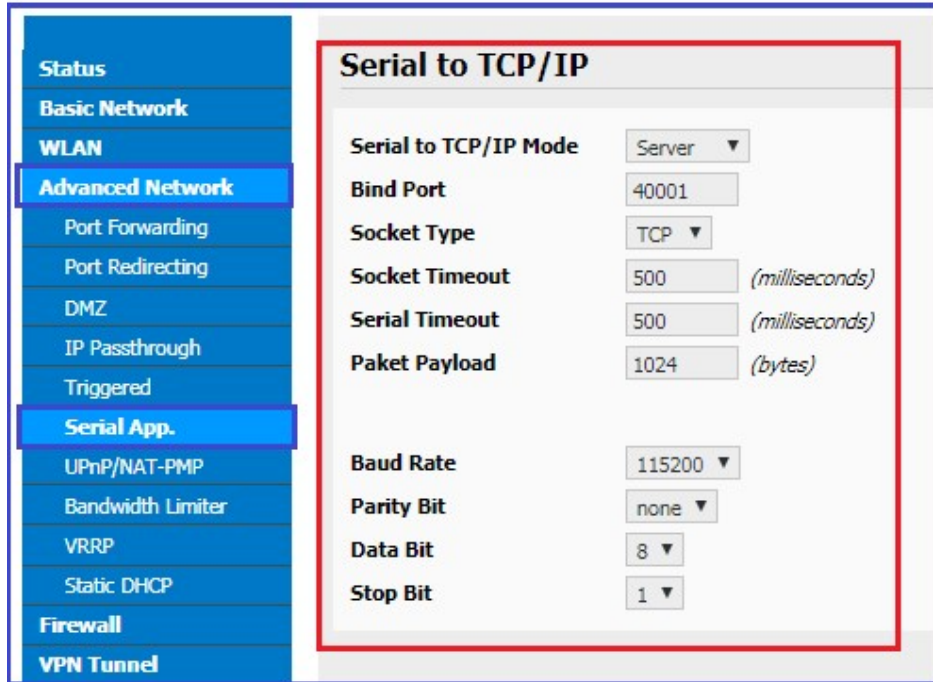


Wiring Diagram.



1. Configure Serial TCP server on the Comset CM210Q-W router:

Go to Advanced Network -> Serial App. See below:

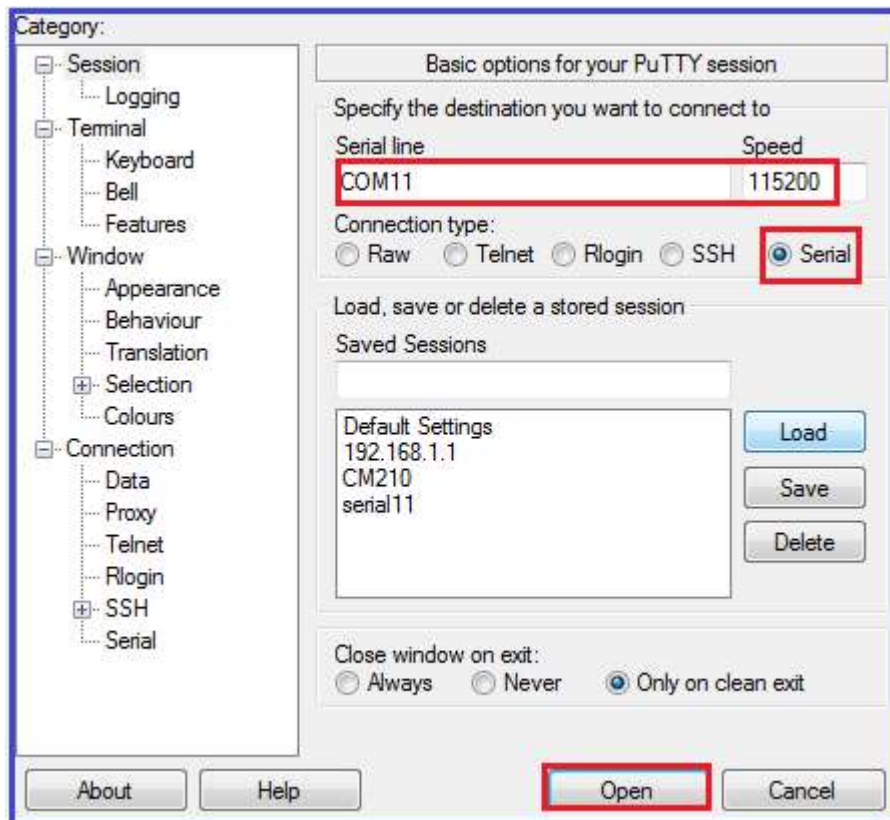
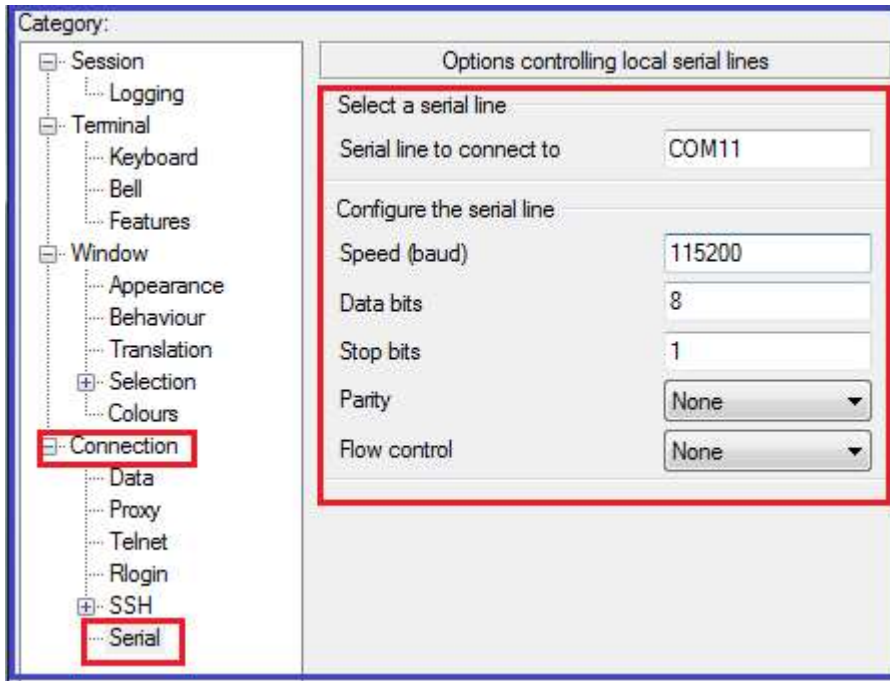


2. On the Serial PC, go to Device Manager and check the current COM serial port:



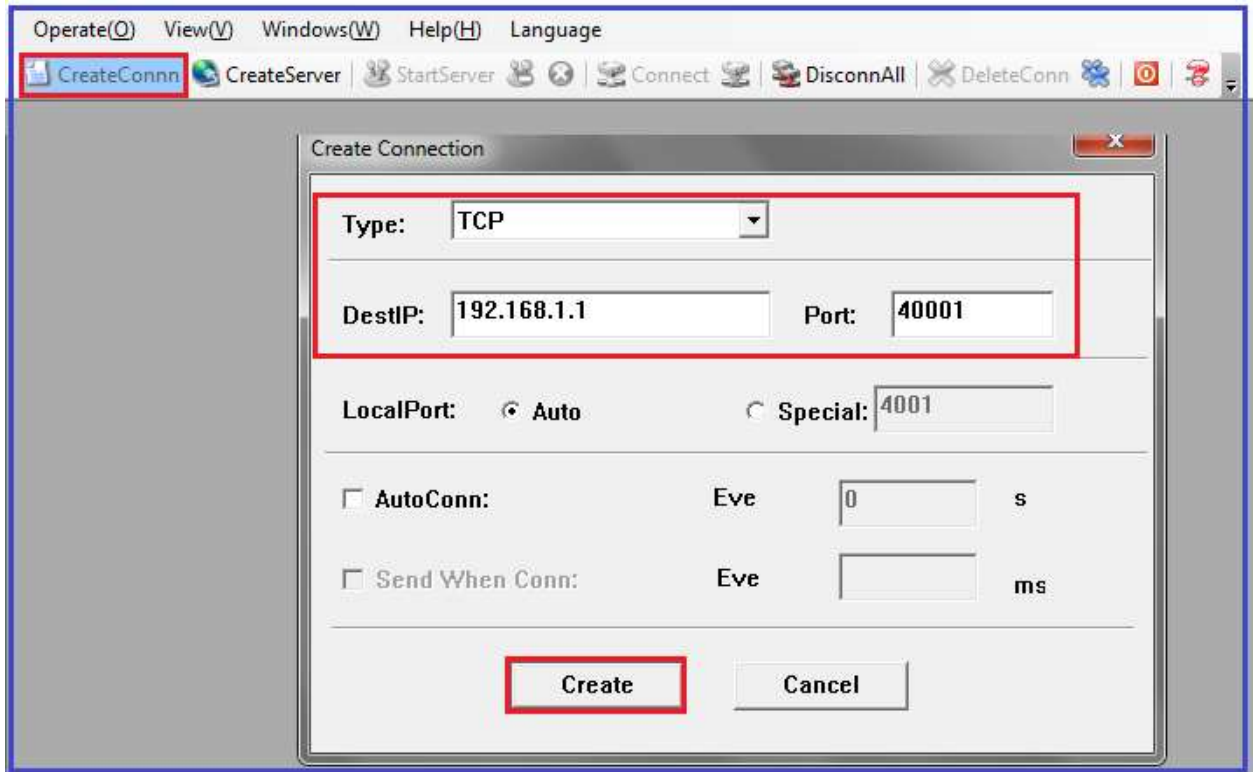
Note: USB serial port uses **COM11**

3. Open putty.exe, and configure serial settings as below:

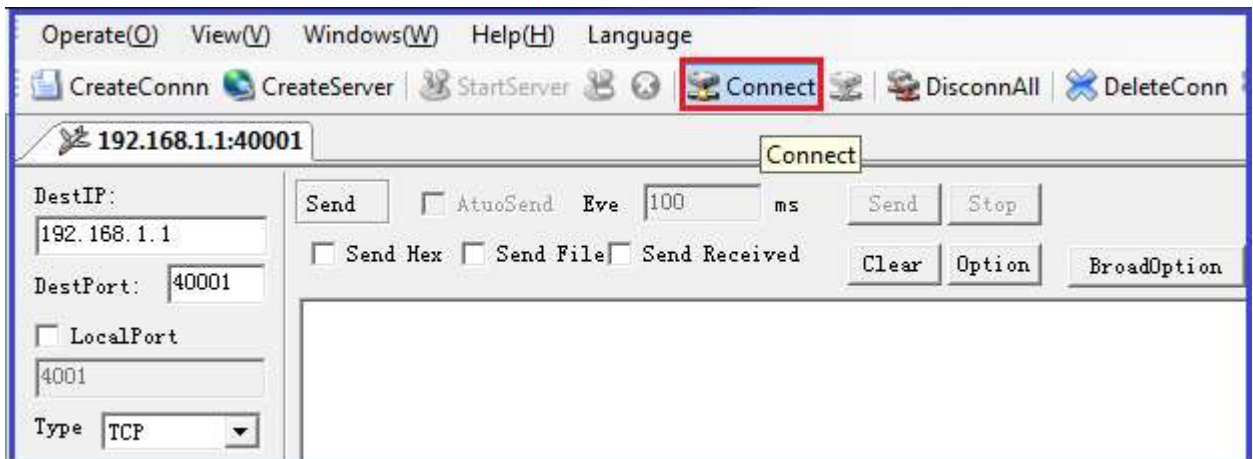


4. Install “TCP/UDP Tool” on the “PC as Serial Client”.

Open the TCP/UDP tool and create a client connection to the Serial TCP server:

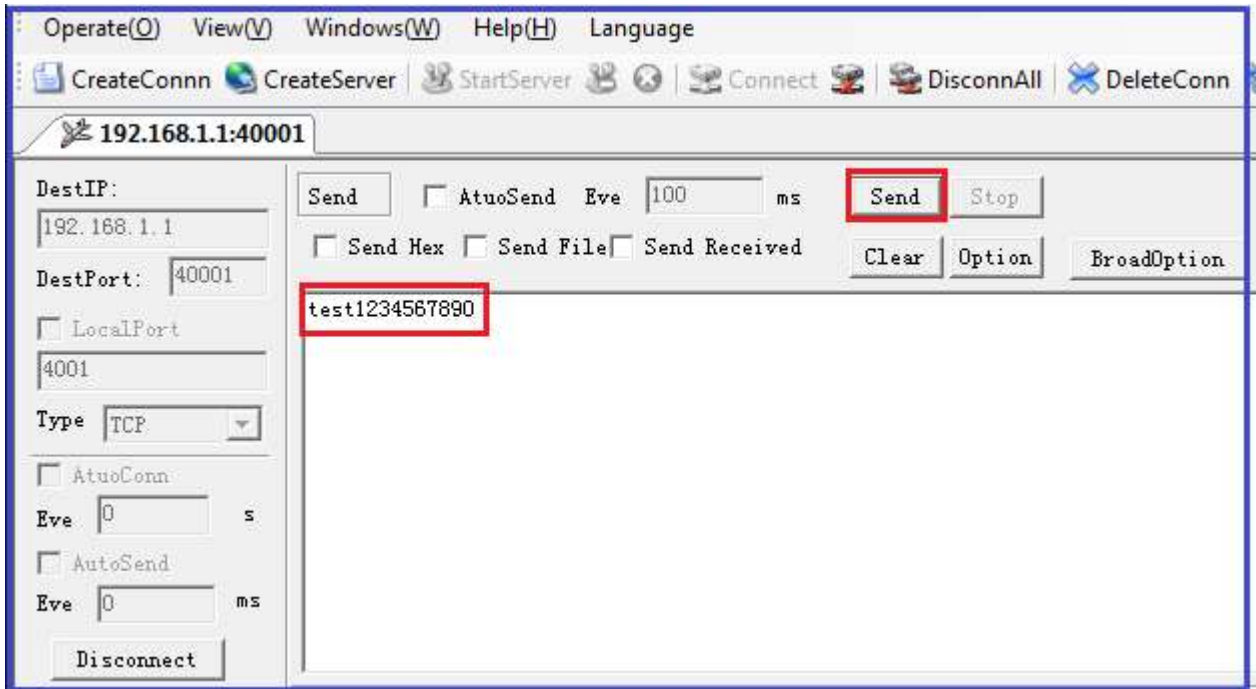


5. After creating a client connection, click on “Connect”. See below:



6. Send a test message from the TCP/UDP Tool to the Serial PC via Putty.

I.e. type “test1234567890” in the box below and click on “Send”. See screenshot below:



7. The Serial PC via Putty receives the data sent from the TCP/UDP Tool:

