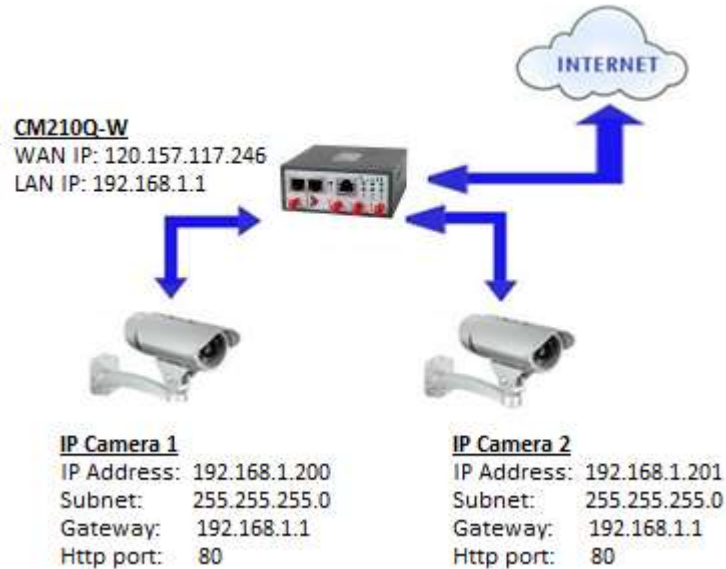


## How to configure Port Forwarding on the Comset CM210Q-W

Network Topology:



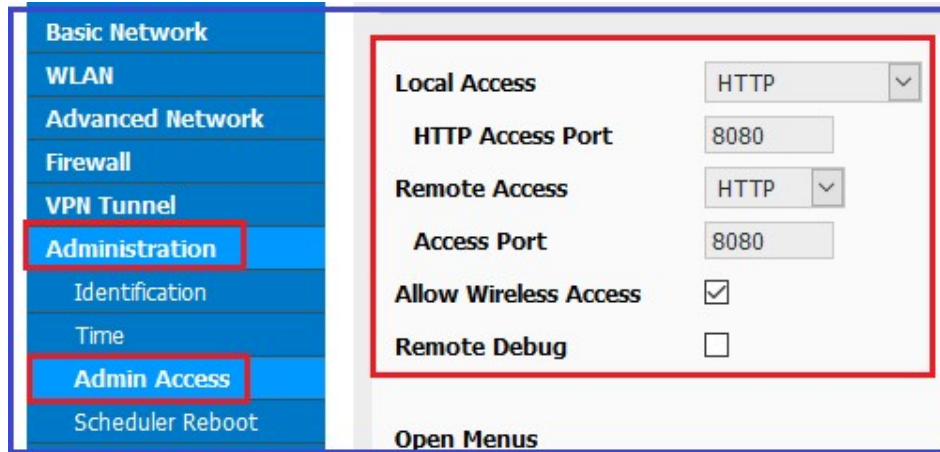
A port forwarding or port mapping is a way of making a computer on your home or business network accessible to computers on the internet, even though they are behind a router.

1. Please configure the router with the correct APN that will provide you with a public WAN IP address, such as telstra.extranet for a Telstra Data SIM. You need to ask your carrier to activate your SIM card with a public WAN IP.
2. Check the WAN IP address on the Status Page of the router.

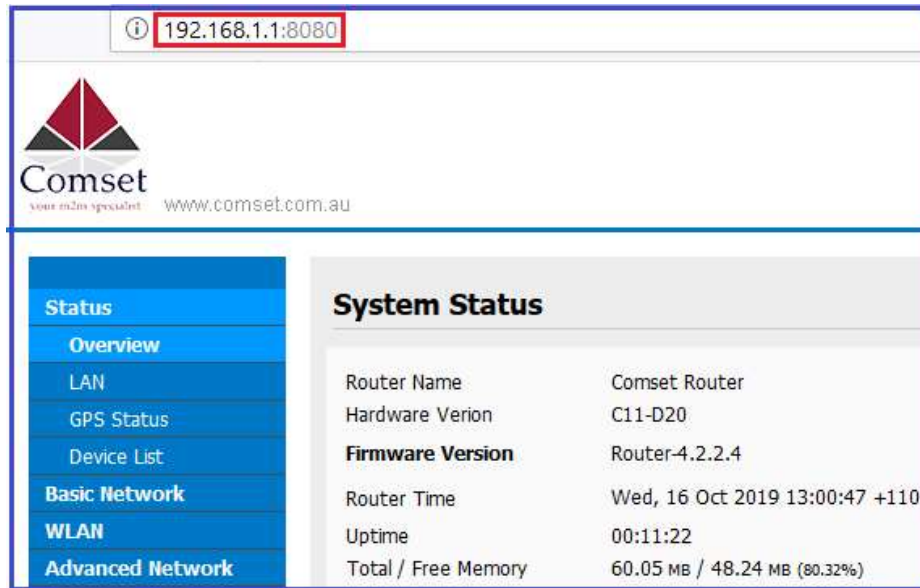
Status	
Overview	IP Address 120.157.117.246
LAN	Subnet Mask 255.255.255.252
GPS Status	Gateway 100.110.155.69
Device List	DNS 112.198.111.84:53, 112.198.126.116:53
Basic Network	Connection Status Connected
WLAN	Connection Uptime 00:02:31
Advanced Network	Main Card Lease Time ... ..
	Back Card Lease Time ... ..

3. Change the CM210Q-W from port 80 to port 8080 to avoid conflict with the IP camera http port 80. Go to Administration -> Admin Access.

Note: Set Remote Access to “HTTP” and change Access Port to port 8080 to allow remote access over the internet via a public WAN IP.



4. To access the GUI of the CM210Q-W, use URL <http://192.168.1.1:8080>



5. Configure Port Forwarding for IP Camera#1 on Port 80 using external port 8081.

Go to Advanced Network -> Port Forwarding . Configure the following:

Protocol: TCP  
 External Port: 8081  
 Internal Port: 80  
 Internal Address: 192.168.1.200

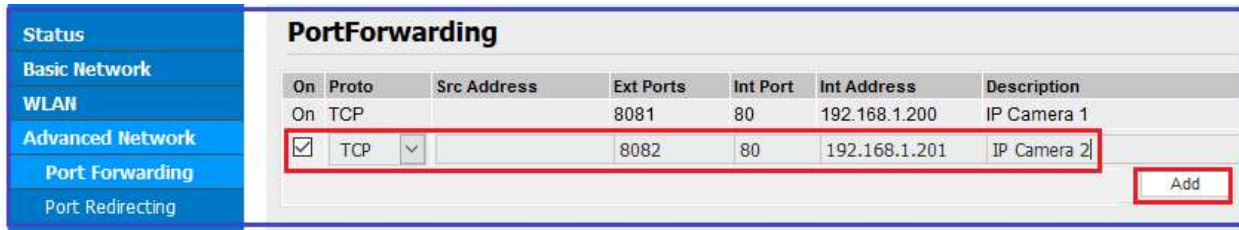
Click on the “Add” button.



6. Configure Port Forwarding for IP Camera#2 on Port 80 using external port 8082.

Protocol: TCP  
External Port: 8082  
Internal Port: 80  
Internal Address: 192.168.1.201

Click on the “Add” button.



On	Proto	Src Address	Ext Ports	Int Port	Int Address	Description
On	TCP		8081	80	192.168.1.200	IP Camera 1
<input checked="" type="checkbox"/>	TCP		8082	80	192.168.1.201	IP Camera 2

Add

7. Click on **Save** to Apply changes.

8. To access the Web GUI of the IP Camera 1, use URL <http://120.157.117.246:8081>

9. To access the Web GUI of the IP Camera 2, use URL <http://120.157.117.246:8082>