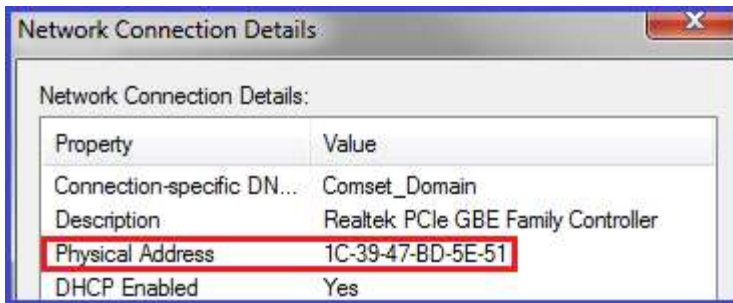


How to configure IP Pass-through on the Comset CM210Q-W

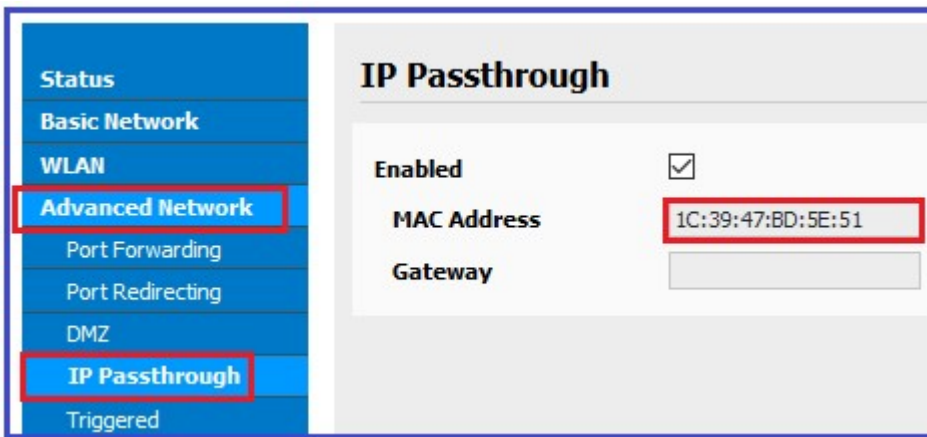
Note: This guide applies to a PC behind the CM210Q-W. It is also applicable to a broadband router behind the CM210Q-W. You need to use the MAC Address on the WAN interface of the broadband router.

1. Check the LAN Mac Address on your PC. Go to Network Adapter-> Right-click -> Status -> Details. See screenshot below:



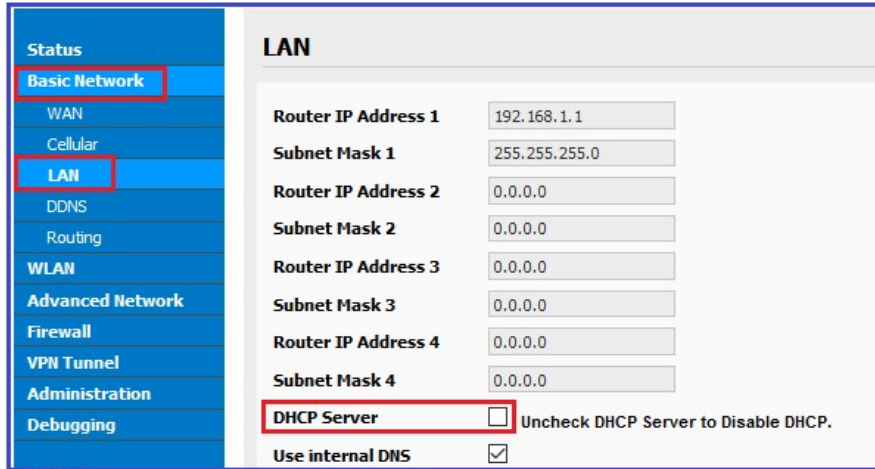
2. Configure IP Pass-through on the Router. Go to Advanced Network -> IP Pass-through and check the 'Enabled' box option. Enter the MAC Address as obtained from your PC LAN interface and click 'Save'.

Note: Use colons between the hexadecimal characters. See screenshot below:

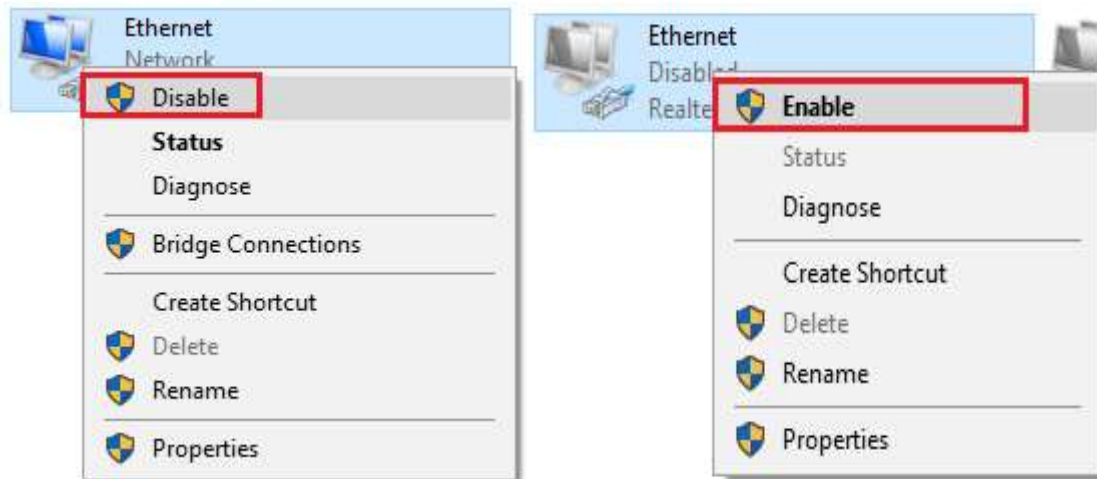


3. Disable DHCP server on the router. Go to Basic Network -> LAN and uncheck the DHCP server. Click on the 'Ok' and 'Save' buttons.

Note: The router will reboot.

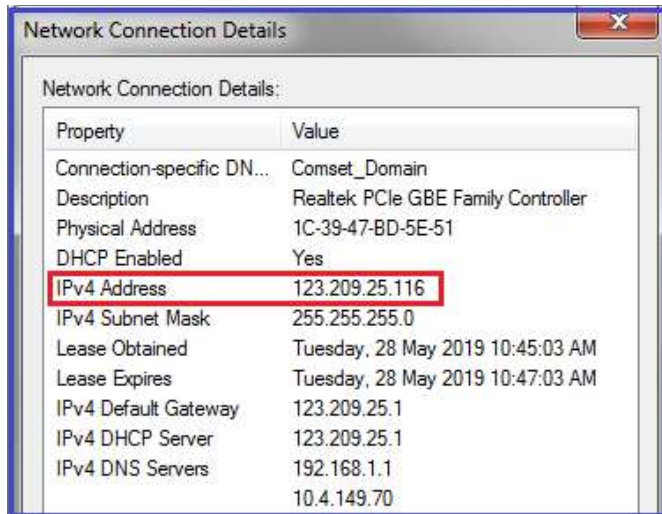


- Refresh the network adapter by clicking on the Disable/Enable button. First right click on the network adapter and select Disable. Then right click on the network adapter and select Enable.



- Check the status of the LAN interface. Go to Network Adapter -> Right-click -> Status -> Details.

The LAN adapter is now using a Public WAN IP address 123.209.255.116 via IP Pass-through.



6. Check your internet connection via the command line:

```
C:\Users\a>ping google.com

Pinging google.com [172.217.167.78] with 32 bytes of data:
Reply from 172.217.167.78: bytes=32 time=75ms TTL=53
Reply from 172.217.167.78: bytes=32 time=46ms TTL=53
Reply from 172.217.167.78: bytes=32 time=47ms TTL=53
Reply from 172.217.167.78: bytes=32 time=47ms TTL=53

Ping statistics for 172.217.167.78:
    Packets: Sent = 4, Received = 4, Lost = 0 (0% loss),
    Approximate round trip times in milli-seconds:
        Minimum = 46ms, Maximum = 75ms, Average = 53ms

C:\Users\a>
```