

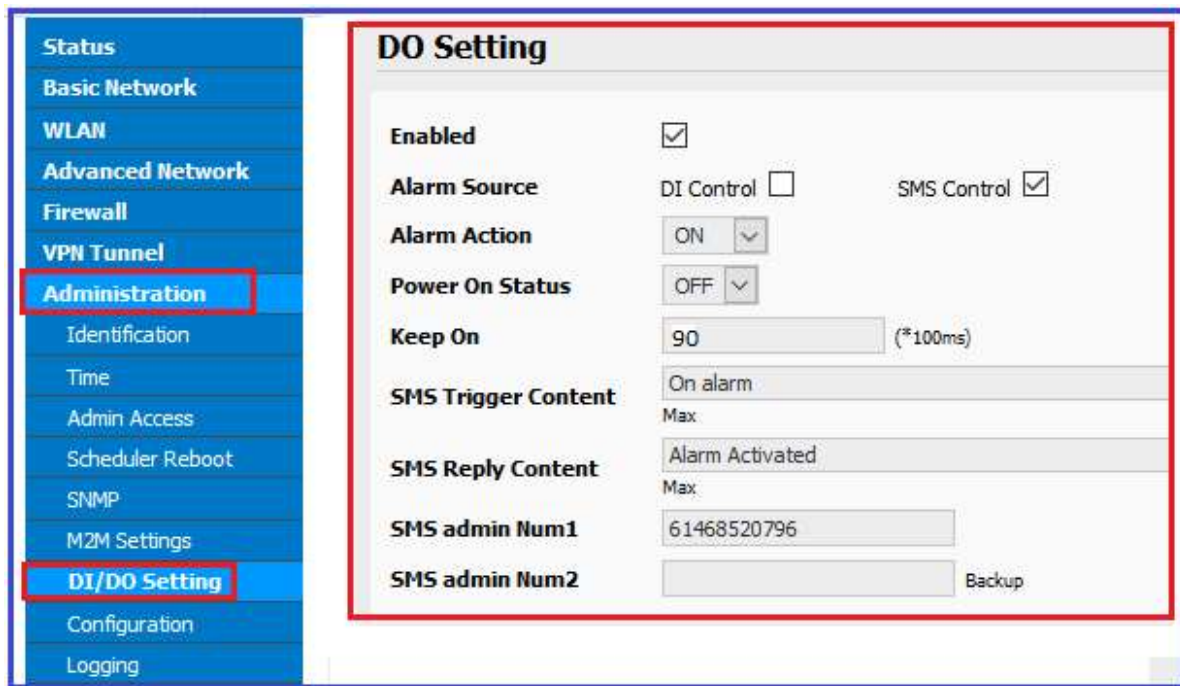
## How to configure Digital Input Output on the Comset CM210Q-W

The CM210Q-W comes with two Digital Input ports and one Digital Output port. The Digital Input ports, when triggered, can send an alarm notification via SMS for a specific event. The Digital Output port can be used to control electrical devices such as opening a gate or activating an alarm.

This guide is to show how to configure DI/DO settings on the router to send an alarm notification using SMS Control and DI Control.

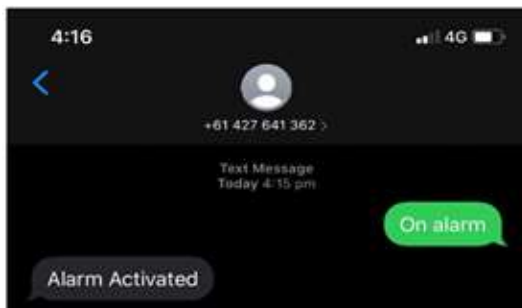
### 1. SMS Control

Go to Administration -> DI/DO Settings -> Enable DO Settings and configure as per screenshot below:



Click Save.

To test SMS Control, send a text i.e. 'On alarm' to the router. You will receive a text 'Alarm Activated' via SMS confirming the trigger event as shown below:



**Note:** The voltage between DO and GND goes from 0 VDC to 5 VDC for the set period of 90ms as shown in the configuration. This allows to control a relay board, which in turn can control electrical devices such as an alarm or a siren.

## 2. DI Control

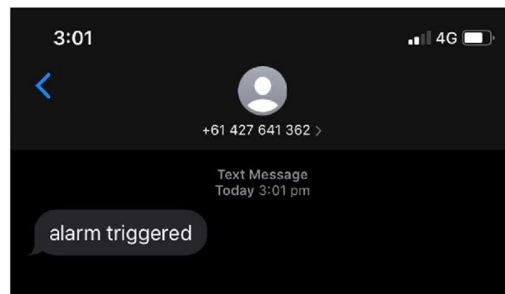
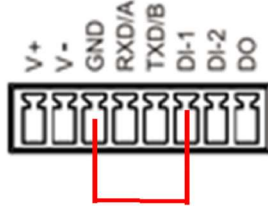
Go to Administration -> DI/DO Settings -> Configure DI & DO Settings as per screenshot below:

The image shows two configuration windows side-by-side. The left window is titled 'DI Setting' and contains the following fields: 'Enabled' (checked), 'Port1' (checked), 'Port2' (unchecked), 'Port1Mode' (dropdown set to 'ON'), 'Filter' (input '1', note: (\*100ms)), 'SMS Alarm' (checked), 'SMS Silence Time' (input '10', note: mins, range: 0~1440, 0-disabled), 'SMS Content' (input 'alarm triggered', note: Char Max), 'SMS receiver num1' (input '61468520796'), and 'SMS receiver num2' (empty, note: backup receiver). The right window is titled 'DO Setting' and contains: 'Enabled' (checked), 'Alarm Source' (checked, 'DI Control', note: 'SMS Control' unchecked), 'Alarm Action' (dropdown set to 'ON'), 'Power On Status' (dropdown set to 'OFF'), and 'Keep On' (input '50', note: (\*100ms)). Both windows have 'Save' and 'Cancel' buttons at the bottom.

Enable SMS Alarm to receive an alarm notification when DI is triggered.

Click Save.

To test DI Control, short DI-1 and Ground. You will receive a text confirming the activation of alarm as shown below.



**Note:** The voltage between DO and GND goes from 0 VDC to 5 VDC when DI is connected to ground.