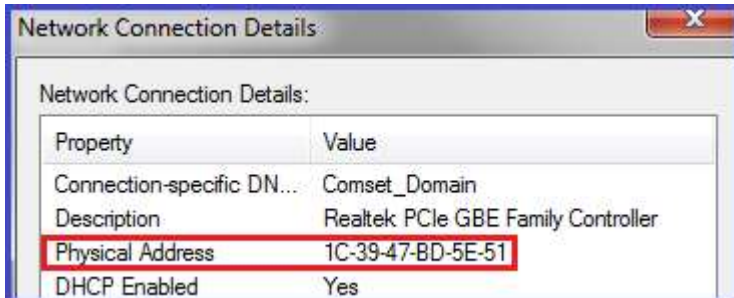


## How to configure IP Passthrough on the CM510Q-W

**Note:** This guide is for a PC behind the CM510Q-W. It is also applicable to a broadband router behind the CM510Q-W. You need to use the MAC Address on the WAN interface of the broadband router.

### 1. Check the LAN MAC Address on your PC.

Go to Network Adapter, Right-click -> Status -> Details. See screenshot below:

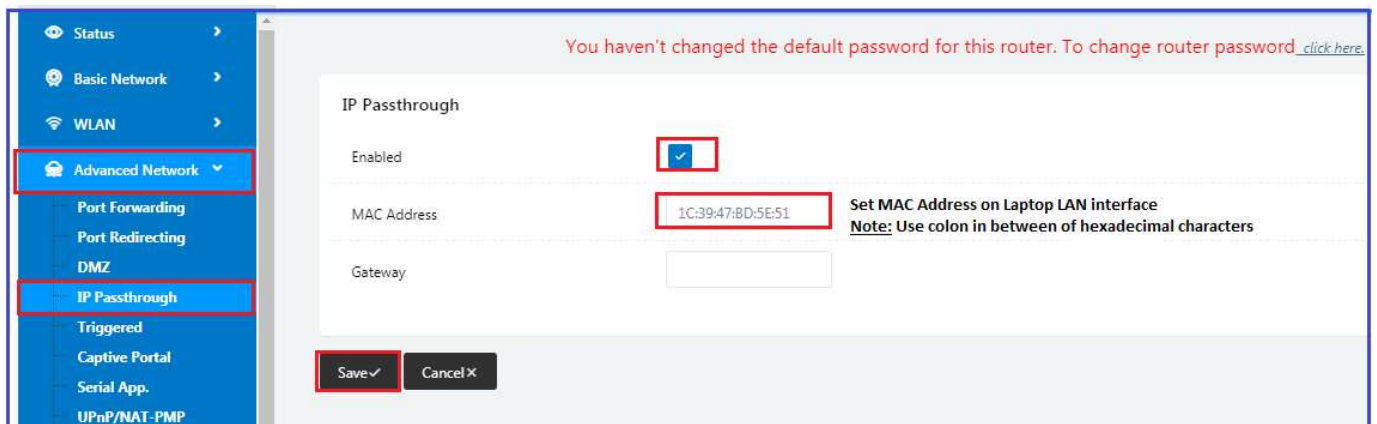


### 2. Configure IP Pass-through on the Router.

Go to Advanced Network -> IP Pass-through -> check 'Enabled' box option.

Enter the MAC Address as obtained from your PC LAN interface and click 'Save'.

**Note:** Use a colon between the hexadecimal characters. See screenshot below:

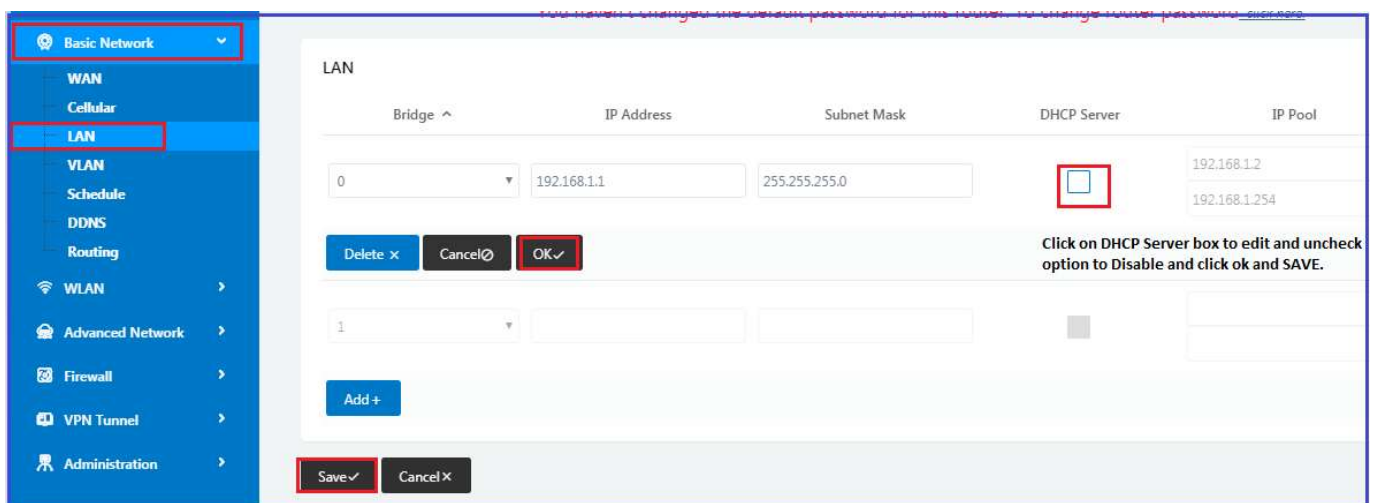


### 3. Disable DHCP server on the router.

Go to Basic Network -> LAN -> Click on DHCP server to edit and uncheck option to Disable.

Click on the 'Ok' and 'Save' buttons.

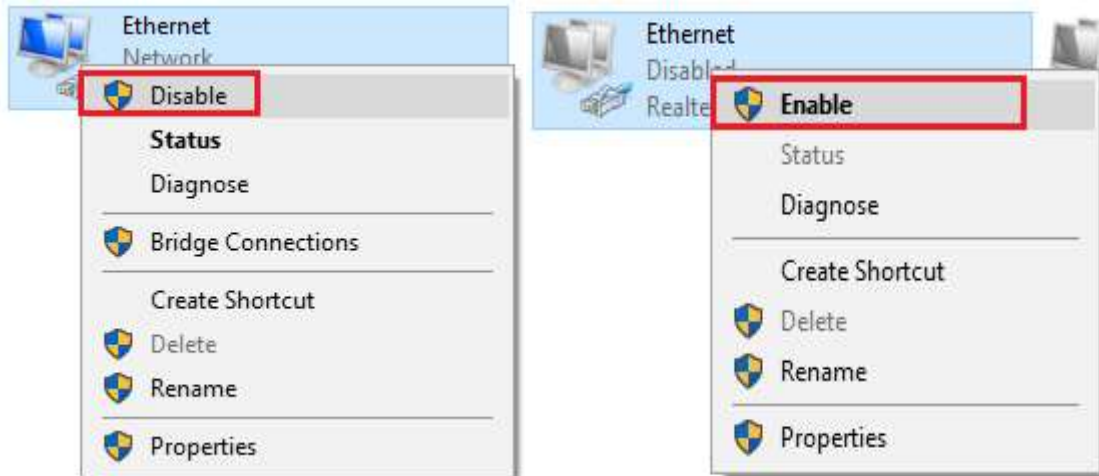
**Note:** The router will reboot.



**4. Refresh the network adapter by clicking on the Disable/Enable button.**

Right click on the network adapter and select Disable.

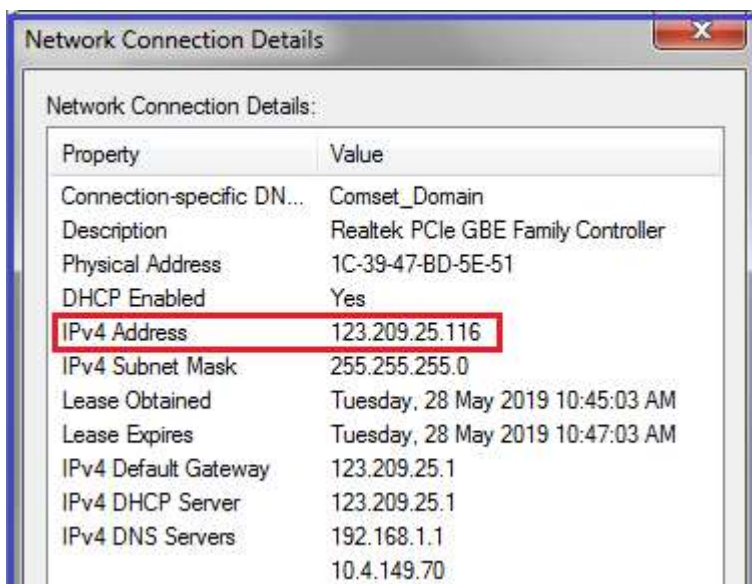
Right click on the network adapter and select Enable. See screenshots below:



**5. Check Status of the LAN interface.**

Go to Network Adapter -> Right-click -> Status -> Details

The LAN adapter is now using Public WAN IP address 123.209.255.116 via IP Pass-through.



**6. Check internet connection via command line.**

